



5 BEECH WALK

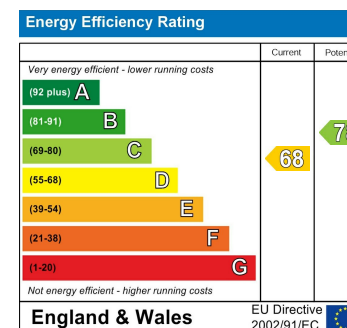
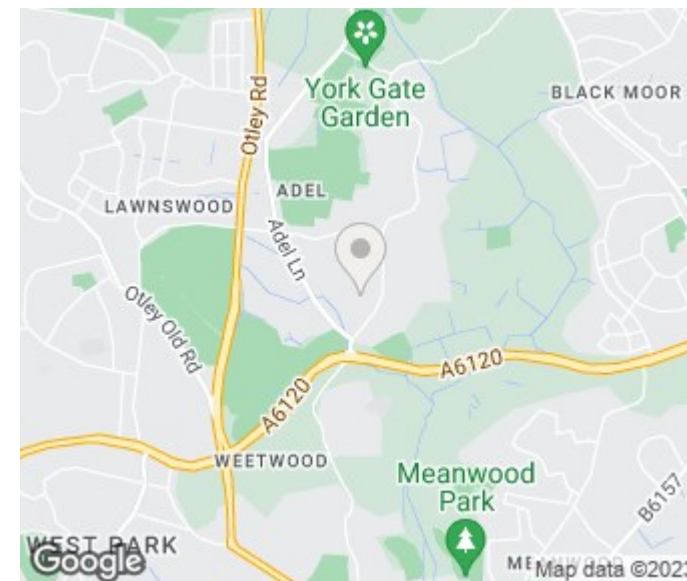
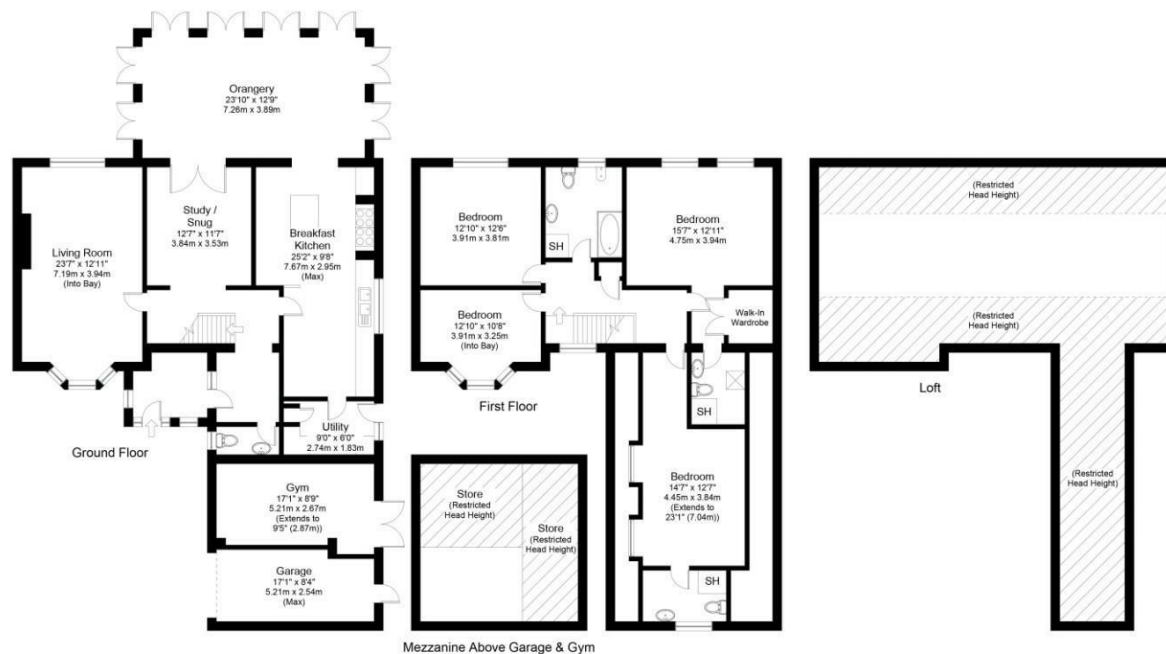
LEEDS, LS16 8NY

£950,000
FREEHOLD

Occupying 1/3 of an acre, with a south facing aspect, this xxxx Sqft property is absolutely stunning. Monroe is exclusively instructed to bring to market this four bedroom detached property in the highly sought after suburb of Adel, in North Leeds.

MONROE

SELLERS OF THE FINEST HOMES



Gross internal floor area excluding mezzanine & loft (approx.): 262.9 sq m (2,830 sq ft)
For illustrative purposes only. Not to Scale. Copyright © Zenith Creations.

Agents Note: Whilst every care has been taken to prepare these particulars, they are for guidance purposes only. All measurements are approximate and are for general guidance purposes only and whilst every care has been taken to ensure their accuracy, they should not be relied upon and potential buyers/tenants are advised to recheck the measurements

Leeds Office Sales
1-3 The Avenue
Alwoodley
Leeds
West Yorkshire
LS17 7BD

0113 870 4443
hello@monroeestateagents.com
www.monroeestateagents.com

MONROE

SELLERS OF THE FINEST HOMES